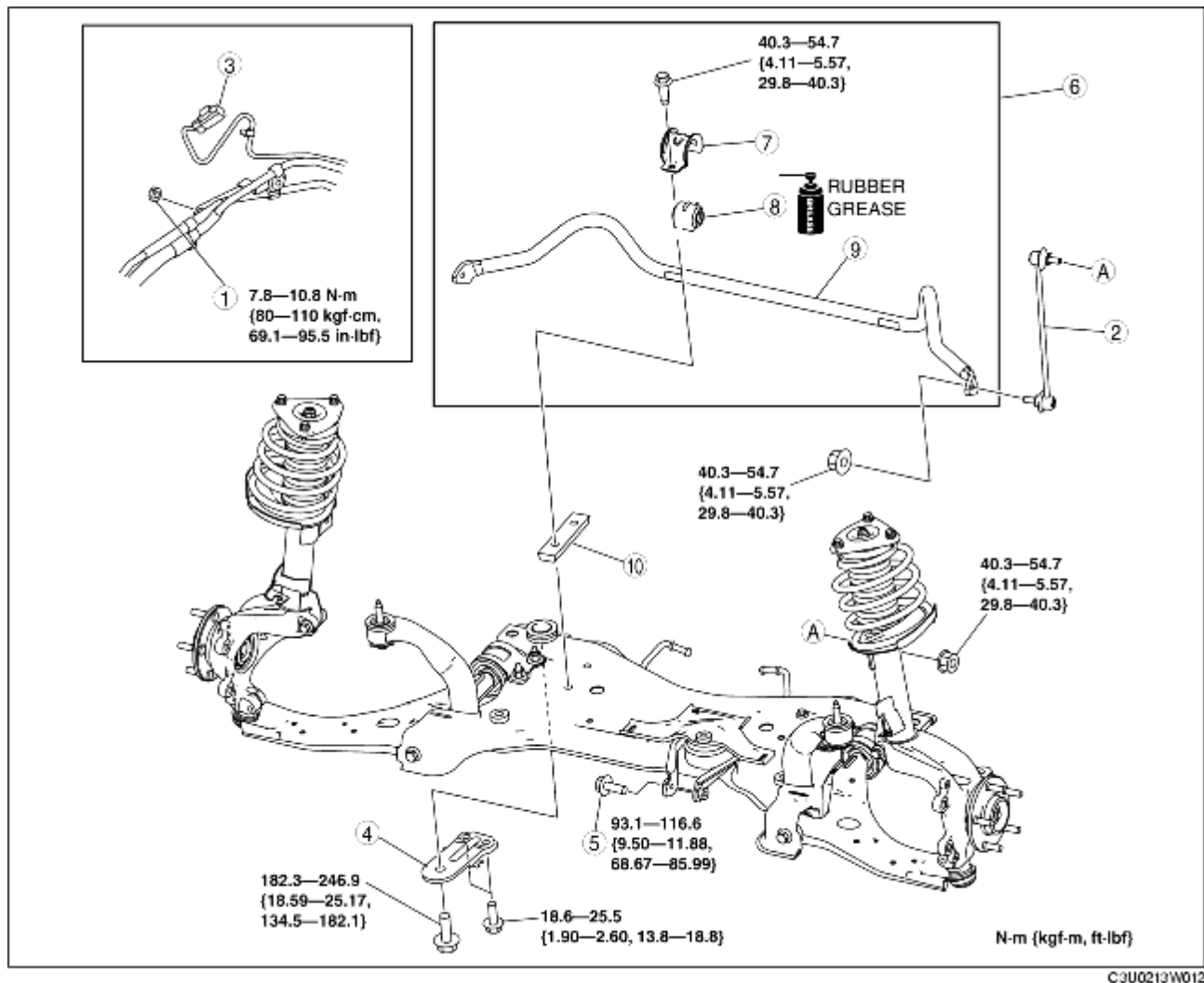


# FRONT STABILIZER REMOVAL/INSTALLATION

B3E021334100W01

1. Detach the steering shaft. (See [STEERING WHEEL AND COLUMN REMOVAL/INSTALLATION.](#))
2. Remove in the order indicated in the table.
3. Install in the reverse order of removal.
4. Inspect the wheel alignment and adjust it if necessary. (See [FRONT WHEEL ALIGNMENT.](#))

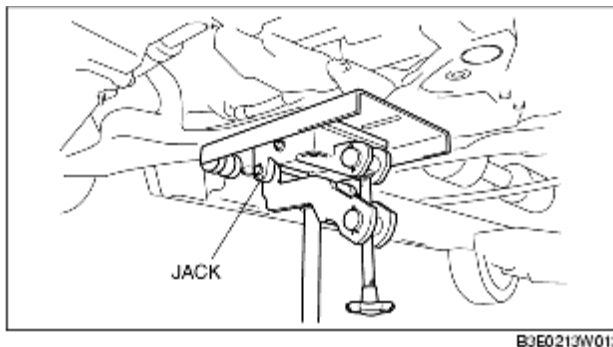


1	Power steering pipe bracket
2	Stabilizer control link
3	Connector (for vehicles with EHPAS)
4	Front crossmember bracket (See <a href="#">Front Crossmember Bracket Removal Note.</a> )
5	No.1 engine mount center bolt

6	Front stabilizer component (See <a href="#">Front Stabilizer Component Removal Note.</a> ) (See <a href="#">Front Stabilizer Component Installation Note.</a> )
7	Stabilizer bracket (See <a href="#">Stabilizer Bracket Removal Note.</a> ) (See <a href="#">Stabilizer Bracket Installation Note.</a> )
8	Stabilizer bushing (See <a href="#">Stabilizer Bushing Installation Note.</a> )
9	Front stabilizer
10	Stabilizer plate

## Front Crossmember Bracket Removal Note

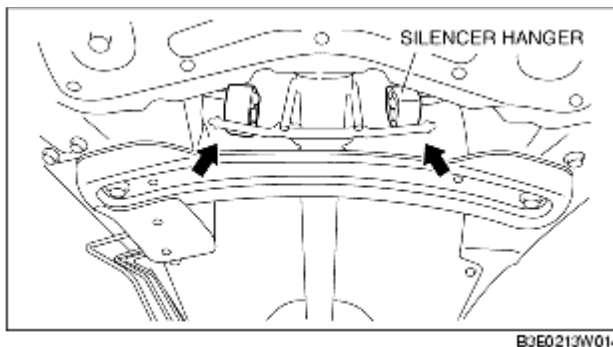
1. Support the front crossmember using a jack.



2. Remove the front crossmember brackets.

## Front Stabilizer Component Removal Note

1. Detach the silencer hangers on the middle pipe from the front crossmember.



2. Lower the front crossmember slowly **approx. 90 mm {3.5 in}** and remove the front stabilizer component.

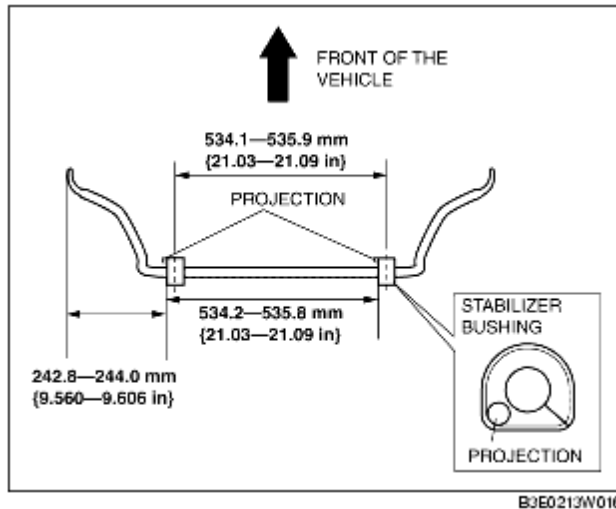
## Stabilizer Bracket Removal Note

1. Secure the stabilizer bracket flange using a vise.

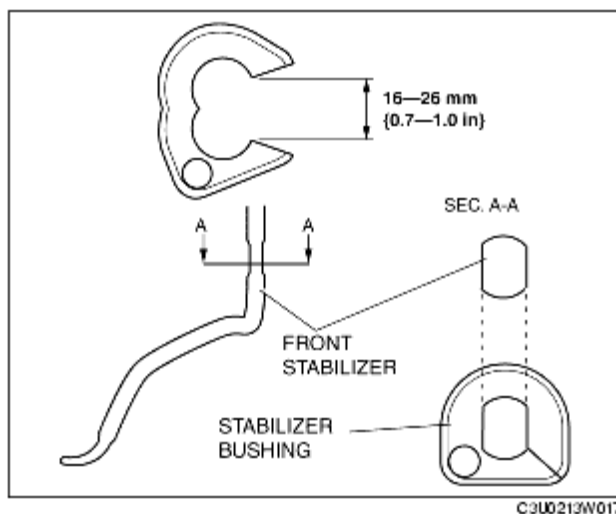
2. Remove the front stabilizer.

## Stabilizer Bushing Installation Note

1. Verify the installation direction of the stabilizer bushing.



2. Widen the stabilizer bushing opening **16-26 mm {0.7-1.0 in}** and install the bushing to the front stabilizer as shown in the figure.

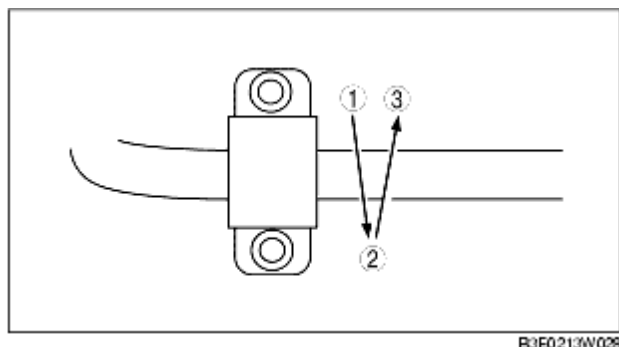


## Stabilizer Bracket Installation Note

1. Apply grease to the stabilizer bushing.
2. Install the stabilizer bracket using a vise.

## Front Stabilizer Component Installation Note

1. Tighten the bolts in order indicated in the figure.



B3E0213W028